

THE MESOAMERICAN REEF FUND



Mesoamerican Reef Fund

(Fondo SAM)

**Antigua Guatemala, Guatemala, February
2016**

Project tools and their implementation

- Strategy and Monitoring Manual
- Planning formats (GWP, AWP, BWP)
- Document development guidelines (GWP, AWP, BWP)
- Text of the Project
- Evaluation of Management Effectiveness Methodology
- MAR Fin (financial gap)
- Tools for specific projects implemented by partners
- Technical report schedule



Strategy and Monitoring Manual

- Document that analyses the objectives of the Planning, Monitoring and Evaluation System of the Project.
- It contains the core elements for the design and implementation of M&E System of the Project
 - The theoretical framework of an M&E system with an emphasis on results-based management
 - Analysis of the Project's current planning, monitoring and evaluation system.
 - Analysis of the Project's current Logical Framework.
 - Analysis of risks and assumptions



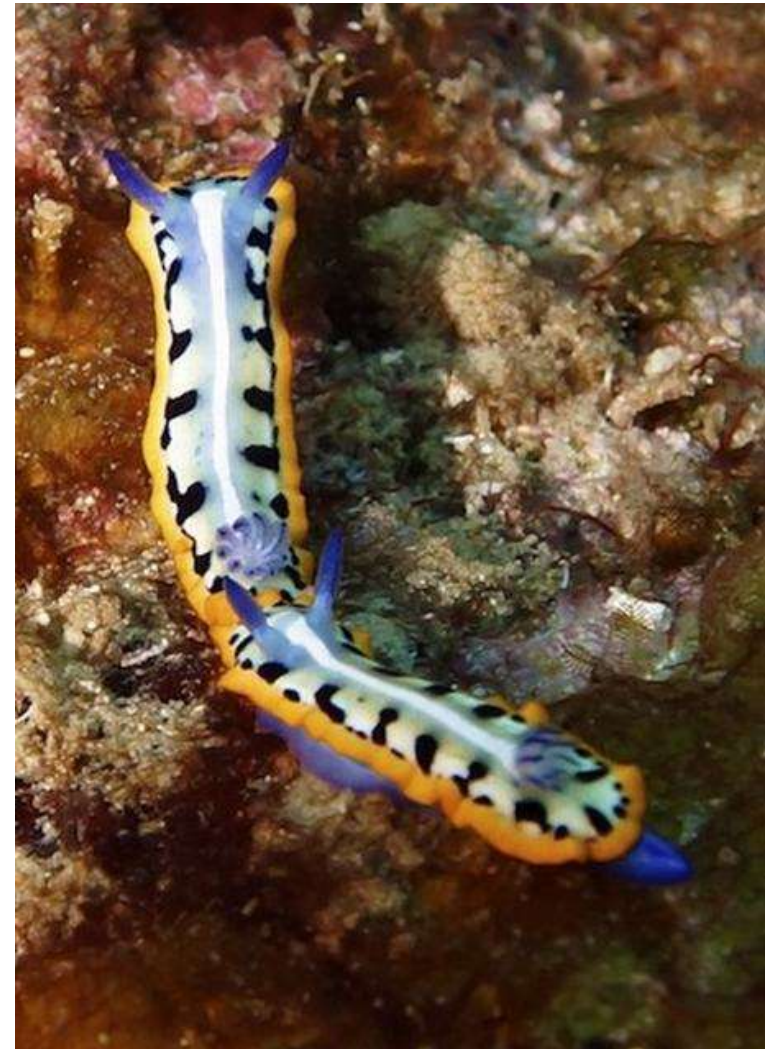


Monitoring Manual

- Practical use guide that establishes the tools, procedures, formats, frequency and responsible.
- This Manual is intended for three user levels:
 - Administrators of the CMPAs
 - Member Funds
 - MAR Fund Central Office
- It contains as annex the report formats (technical and financial) of the Project.

Planning Formats

- General Working Plan development guide (GWP):
 - What is a GWP
 - GWP structure
- Annual Working Plan development guide (AWP):
 - What is an AWP
 - Necessary elements to be included in the AWP
- Biennial Working Plan development guide (BWP):





Text of the Project

- Guiding document of the Project
 - Strategy and intervention logic
 - Implementation bodies
 - Execution period
 - Technical support consultants
 - Budget
 - Logical Framework
 - Description of the Project with results and indicators.
 - Project Planning
 - Technical and Administrative reports
 - Monitoring and Evaluation

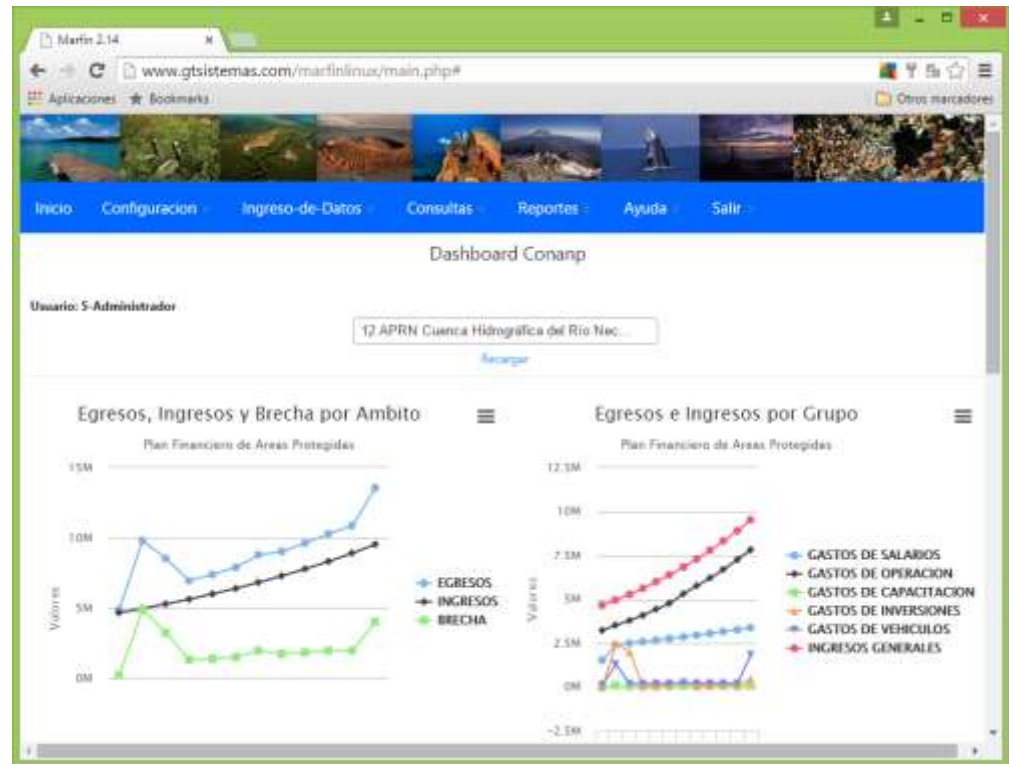


Evaluation of Management Effectiveness Methodology

- Tool used to acquire strategic information from management entities and stakeholders, identifying strengths, weaknesses, and needs of current areas management.
- Phase1
 - Initial assessment in 2013
 - Final assessment in 2017
- Phase 2
 - Initial assessment in 2015
 - Final assessment in 2019

MAR Fin (financial gap)

- Tools used for the development of protected areas financial plans. Collects expenses, incomes, financial gap and indicators information, that describe the status of the area.
- Phase 1
 - Initial assessment in 2013
 - Final assessment in 2017
- Phase 2
 - Initial assessment in 2016
 - Final assessment in 2019



Tools for specific projects implemented by partners

This formats are used in the development of specific projects of each MCPA, within the Project framework

- Commitment and Compliance Letter
- Proposal Format
- Development table (Annex 1)
- Budget of the Project (Annex 2)
- Technical and financial report format (Project Cycle)



2016 Technical report schedule

- Three quarterly technical reports
- One cumulative annual report

Technical report Schedule delivery	Phase 1	Phase 2
January to March	April 14	April 15
April to June	July 14	July 15
July to September	October 13	October 14
October to December (Annual)	January 23, 2017	January 24, 2017



Thanks

